





**\*\*AVAILABLE FEBRUARY 2026\*\***

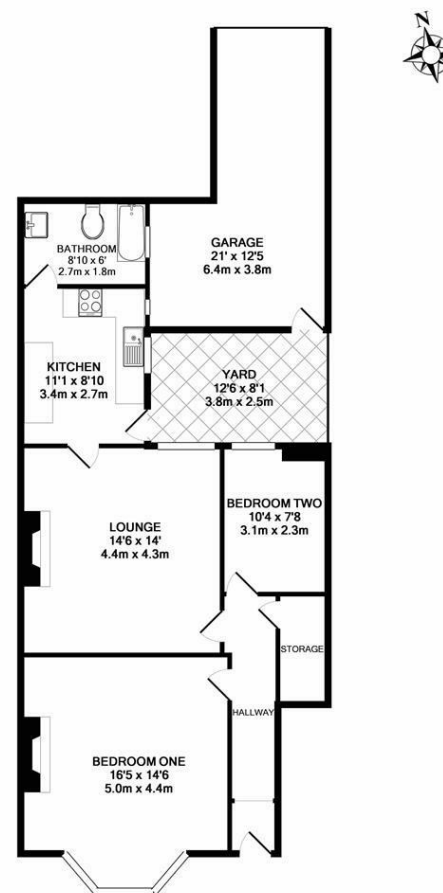
**\*\*UNFURNISHED\*\* \*\*GARAGE\*\*** A stylish and eclectic ground floor 'Tyneside' style ground floor flat, located in the heart of Jesmond. Boasting a large garage for private use, and only seconds walk from a wealth of conveniences including coffee shops, bars and restaurants as well as West Jesmond Metro station.

Set behind a well kept hedge offering privacy to the front of the property, the accommodation comprises; an entrance hallway with large storage cupboard/wardrobe; a gorgeous master bedroom to the front with bay window, wood flooring and feature fireplace; second double bedroom to the rear with feature fireplace; a lounge with tiled flooring and feature fireplace; modern fitted kitchen with continued tiled flooring through from lounge as well as tiled walls and appliances including fridge freezer, electric oven and gas hob, washing machine and dishwasher; to the rear there is a fabulous bathroom, with free standing roll-top bath, WC and wash hand basin. Externally there is a private yard as well as a large garage, boasting in excess of 21ft long, a real rarity for this type of property.

Available on an unfurnished basis, with gas central heating throughout and on street permit parking to the front.

Available 1st February 2026 | £1,200pcm |  
Ground Floor Flat | Fabulous Finish |  
Unfurnished | 940 Sq. ft (87.3m2 including garage)  
| Garage | Lounge | Modern Kitchen | Two  
Double Bedrooms | Plush Bathroom WC |  
Private Rear Yard | Street Permit Parking | Brilliant  
Location | Close To Local Conveniences | GCH |  
Council Tax Band: B | EPC Rating: D

**£1,200 PCM**



TOTAL APPROX. FLOOR AREA 940 SQ.FT. (87.3 SQ.M.)  
Whilst every attempt has been made to ensure the accuracy of the floor plan contained here, measurements of doors, windows, rooms and any other items are approximate and no responsibility is taken for any error, omission, or mis-statement. This plan is for illustrative purposes only and should be used as such by any prospective purchaser. The services, systems and appliances shown have not been tested and no guarantee as to their operability or efficiency can be given.  
Made with Metropix ©2018

**IMPORTANT NOTE:** These particulars and the descriptions and measurements herein do not constitute representation and whilst every effort has been made to ensure accuracy, this cannot be guaranteed.

